



高压直流接触器专业制造商

苏州安来强电子科技有限公司
Suzhou Anlaiqiang Electronic Technology Co., Ltd

江苏省苏州市虎丘区泰山路599号

No.599,Taishan road,Huqiu District,Suzhou city,Jiangsu province China
Tel: 086-512-6618 8468 150 5159 9910 (市场部 /Marketing Department)
E-mail: ALQ@sz-alq.com



声明:
本产品选型手册仅供客户选型时参考,如有更改,恕不另行通知,产品所有参数以《行业选型手册》为准。
接触器在不同应用领域的性能参数要求均有所不同,此手册不能完全描述清楚,因而客户应根据具体的使用
条件选择合适的接触器,若有疑问,请与苏州安来强电子科技有限公司联系,以便获得更多技术支持。

Special Claim:
Because the performance is different from each other when it used in different conditions,
customer could choose the appropriate product according to the specific using conditions. If there
is any queries, please contact ALQ for technical support.



www.zgalq.com



微信公众号



高压直流接触器专业制造商

ANLAIQIANG TECHNOLOGY

Professional manufacturer of
high voltage DC contactors





磐石之安 / 继往开来 / 奋发图强

*Panshi's peace will continue to
forge ahead and strive for strength*

苏州安来强电子科技有限公司创建于2013年，公司坐落于美丽富饶的历史文化名城-苏州，公司致力于高压直流接触器、断路器、继电器的研发、生产与服务。产品广泛应用于电动汽车、充电桩、仓储物流、储能、5G、军工等直流电源应用领域。

公司拥有一支高素质的员工队伍，凭借着不断增强的创新能力与日趋完善的服务能力赢得了广大客户的信任与认可。公司不断引进国内外先进设计理念，携手东南大学等重点院校紧密合作，并与贵州振华群英电器有限公司建立战略合作伙伴关系。公司凭借极强的自主创新能力，研发的相关技术与产品先后获得多项核心专利，产品不断升级迭代至全球领先水平。

公司注重全流程的质量管理，拥有一批先进的智能化、数字化研发和制造管理设备系统，通过科学化的管理确保产品质量。

苏州安来强致力于为用户提供高端电器产品，为社会、客户创造更高价值，打造一流领先的民族电器品牌，力争为新能源事业做出更大的贡献。



Enterprise Profile

Suzhou Anlaiqiang Electronic Technology Co., Ltd., founded in 2013, is located in Suzhou. We are committed to the R&D, production and service of high-voltage DC contactors, circuit breakers and relays. Our products are widely used in DC power applications such as electric vehicle, charging pile, warehousing and logistics, energy storage, 5G communication, military industry and so on.

We have won customers' trust and recognition with a high qualified team who has innovation ability and perfect service system. We try our best to keep the product at the world-level by introducing advanced design philosophy from home and abroad, innovating dependently, co-operating with college. We make advantage of scientific management, with advanced intelligent digital R&D and manufacturing management to ensure product quality.

Suzhou Anlaiqiang is devoted to offering customers high-quality products and after sale service and we also obtained a series of professional patents.

Suzhou Anlaiqiang is struggling to building a world level electrical brand and making contribution to new energy storage industry .

[2013]

成立时间
Established time

[16,880,000]

注册资金
Registered capital

[10,000]

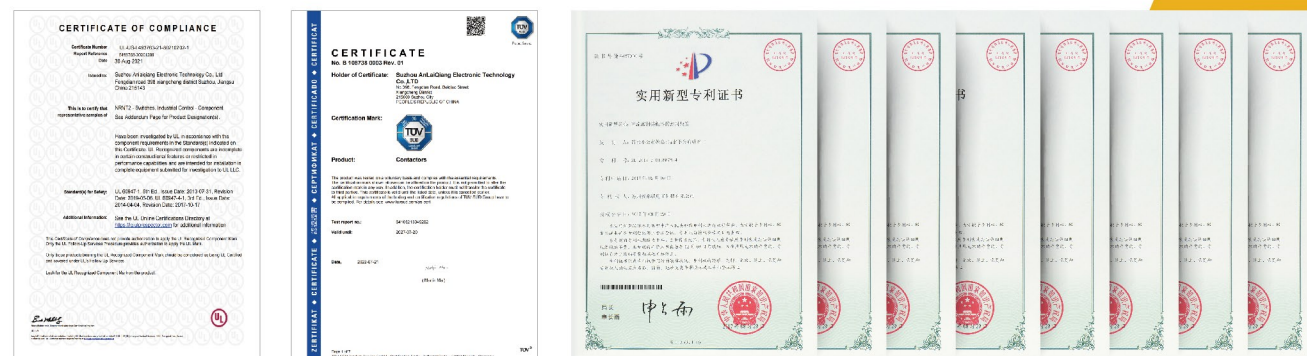
厂房面积/m²
Plant area

[IATF16949]

质量管理体系认证
Quality management system certification

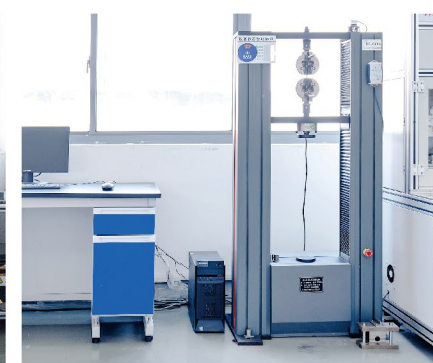
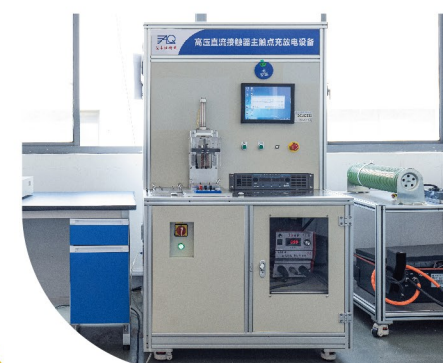
Qualifications

企业资质



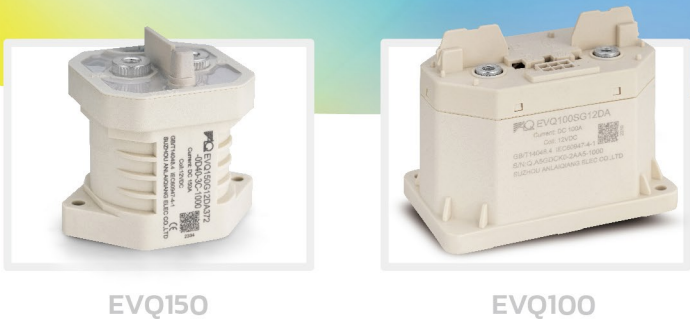
Quality

Assurance 品控管理



DC Contactor
Product Specifications

直流接触器产品指南



Product Series	产品系列	EVQ Series								EVQ Series									
Product work system	产品工作制	不间断工作制/ Uninterrupted work system								不间断工作制/ Uninterrupted work system									
Main contact polarity	主触点极性	无极性/ Non-polarity								无极性/ Non-polarity									
Load voltage range	负载电压范围	12-1500VDC								12-1500VDC									
Load current	负载电流	10A	30A	50A	100A	135A		150A	200A	250A	300A	350A	400A	500A	600A	800A	1000A		
Medium pressure resistance	介质耐压	3500VAC 1min ≤10mA								3500VAC 1min ≤10mA									
Insulation resistance	绝缘电阻	1000MΩ@1000VDC								1000MΩ@1000VDC									
Vibration	振动	20g peak \ 80~2000Hz								20g peak \ 80~2000Hz									
Impact	冲击	20g peak \ 1/2 sine								20g peak \ 1/2 sine									
Coil rated voltage	线圈额定电压	12VDC / 24VDC / 48VDC								12VDC / 24VDC / 48VDC								12 / 24VDC	
Auxiliary contact	辅助触点	×	×	×	√	√		√	√	√	√	√	√	√	√	√	√		
Use and storage temperature range	使用与存储温度范围	—40~+85℃								—40~+85℃									
Certification	安规认证	CQC / TUV / UL								CQC / TUV / UL									



Industrial Vehicle System

工业车辆系统

- ◎ 系统电压通常为24-96VDC
- ◎ 系统电流变化频繁
- ◎ 有特殊应用场景，如防爆、冷库、潮湿等环境
- ◎ System voltage is typically 24-96VDC
- ◎ System current changes frequently
- ◎ There are special application scenarios, such as explosion-proof, cold storage, humid and other environments



01

仓储物流

Warehouse Logistics

AGV / 电动堆高车 / 电动叉车
AGV/ Electric Stacker
/Electric Forklift

02

低速车

Low Speed Car

高尔夫球车 / 清扫车 / 观光车
Golf cart/ Sweeper cart
/Sightseeing cart

03

高空检查作业车

High-altitude
Inspection
Work Vehicle



安来强科技

预充/加热接触器

Precharge/ Heat Contactor



EVQ30

主接触器

Main Contactor



EVQ100/150



EVQ200/250



EVQ300/400



EVQ500/600

工业车辆直流接触器主要性能要求

- ◎ 低温升低功耗
- ◎ 高防护等级
- ◎ 触点不易粘连

Main performance requirements for industrial vehicle DC contactor

- ◎ Low temperature & Low power consumption
- ◎ High level protection
- ◎ Contacts are not easy to stick

ESS
Energy Storage System

ESS储能系统

- ◎ 系统电压高，达到1500VDC
 - ◎ 充、放电同口
 - ◎ 工作时间长，稳定性要求高
- ◎ High system voltage, reaching 1500VDC
 - ◎ Same port for input & output
 - ◎ Long working time and high request for stability



01

分布式梯次储能系统

Distributed Ladder
Energy Storage System

02

家庭储能系统

Home Energy
Storage System

03

变电站UPS系统

Substation
UPS system



04

集装箱式储能

Containerized Energy
Storage

预充接触器

Precharge contactor



EVQ30

主接触器

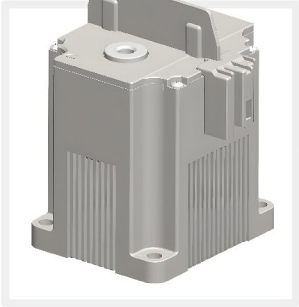
Main Contactor



EVQ100



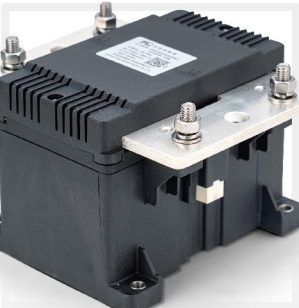
EVQ250



EVC15-350/400



EVQ400/500/600



EVQ800/1000

- 储能系统直流接触器主要性能要求
- ◎ 额定工作电压满足1500VDC
 - ◎ 主触点抗短路能力高
 - ◎ 主触点低温升
 - ◎ 主触点无极性，带反馈触点

- Main performance requirements for
DC contactors in energy storage system
- ◎ Rated working voltage meets 1500VDC
 - ◎ Main contact has high ability to prevent short circuit
 - ◎ Low temperature rise for main contact
 - ◎ Main contact with non-polarity and feedback contact

Charging Pile System

充电桩系统

- ◎ 高电压等级，达到1000VDC
- ◎ 工作时间长
- ◎ 低功耗
- ◎ High voltage level to 1000VDC
- ◎ Long working time
- ◎ Low power consumption

充电桩直流接触器主要性能要求

- ◎ 可靠的接通与分断能力
- ◎ 低温升、低功耗
- ◎ 主触点无极性，带反馈触点

Main performance requirements of charging pile DC contactor

- ◎ Reliable making and breaking capabilities
- ◎ Low temperature rise, low power consumption
- ◎ Main contact with non-polarity and feedback contact



01

一体双枪式充电桩

Integrated Dual-gun Charging Pile

02

分体式四充/八充充电桩

Home Energy Storage System

03

集成式充电桩

Integrated Charging Pile

04

一体一枪式充电桩

All-in-one One-gun Charging Pile

开关模块

Switch module



A型开关模块



B型开关模块

主接触器

Main Contactor



EVQ50/100



EVQ150



EVQ250/300



EVQ400/600

Electric Vehicle System

电动汽车系统

- ◎ 车辆启停时，能够接通和断开电源
- ◎ 车辆在紧急情况下，能够切断回路
- ◎ 车辆在爬坡或加速时，能够承受过载电流

- ◎ The power can be turned on and off when the vehicle starts and stops
- ◎ The vehicle can cut off the circuit in an emergency
- ◎ The vehicle can withstand overload current when climbing or speeding up



电动汽车直流接触器主要性能要求

- ◎ 能够可靠的接通、分断回路电流
- ◎ 抗振动冲击性能好 ◎ 低噪音

Main performance requirements for DC contactors in energy storage system

- ◎ Make and break circuit current reliably
- ◎ High ability to prevent to vibration and impact
- ◎ Low noise

预充/加热接触器 Precharge/ Heat Contactor



EVQ30

主接触器 Main Contactor



EVQ100



EVQ200/250



EVQ400/600

01

乘用车

Passenger Car

02

物流车

Logistics Vehicle

03

商用货车

Commercial Truck